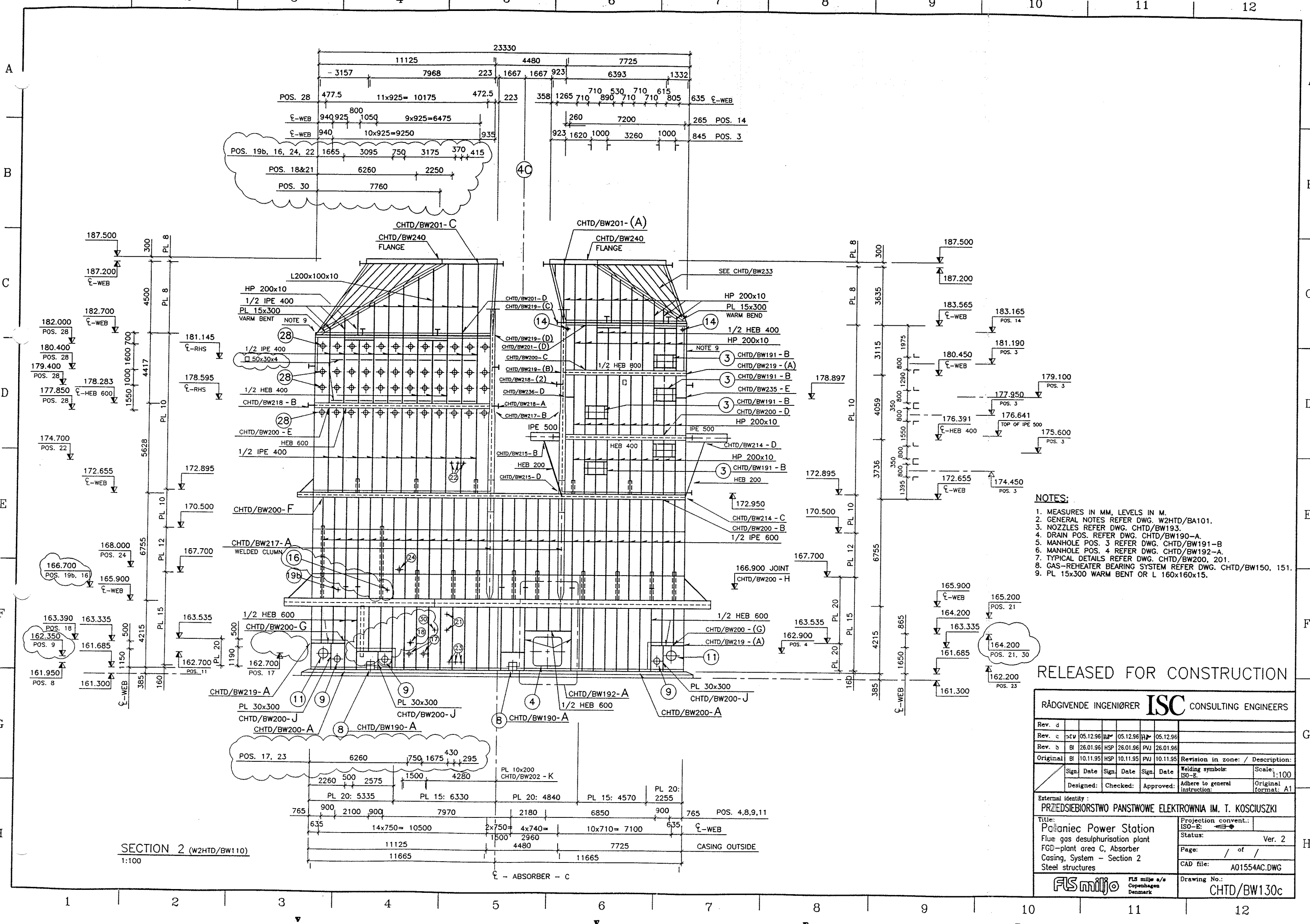


- NOTES:
1. MEASURES IN MM, LEVELS IN M.
 2. GENERAL NOTES REFER DWG. W2HTD/BA101.
 3. NOZZLES REFER DWG. CHTD/BW193.
 4. DRAIN POS. 8 REFER DWG. CHTD/BW190-A.
 5. MANHOLE POS. 3 REFER DWG. CHTD/BW191-B.
 6. TYPICAL DETAILS REFER DWG. CHTD/BW200, 201.
 7. GAS-REHEATER BEARING SYSTEM REFER DWG. CHTD/BW150, 151.
 8. PL 15x300 WARM BENT OR L 160x160x15.

RELEASED FOR CONSTRUCTION

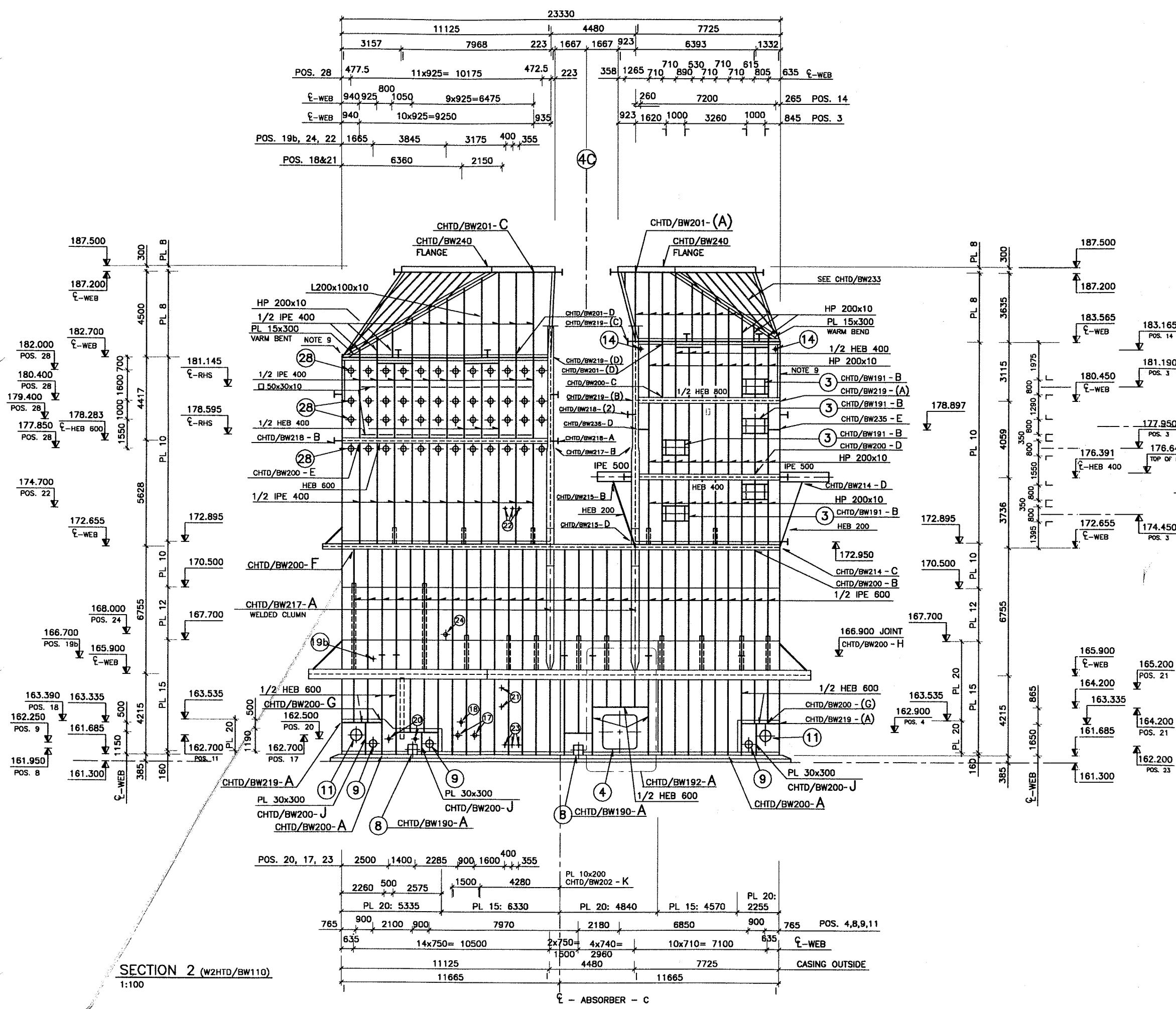
| RÅDGIVENDE INGENIØRER ISC CONSULTING ENGINEERS | | | | | | | | | |
|---|----------|----------|----------|-----|----------------------------------|--|--|--|--|
| Rev. d | | | | | | | | | |
| Rev. c | 05.12.96 | 05.12.96 | 05.12.96 | | | | | | |
| Rev. b | 26.01.96 | HSP | 26.01.96 | PWJ | 26.01.96 | | | | |
| Original | 10.11.95 | HSP | 10.11.95 | PWJ | 10.11.95 | | | | |
| Revision in zone: / Description: | | | | | Revision in zone: / Description: | | | | |
| Designed: / | | | | | Designed: / | | | | |
| Checked: / | | | | | Checked: / | | | | |
| Approved: / | | | | | Approved: / | | | | |
| Adhere to general instruction: / | | | | | Adhere to general instruction: / | | | | |
| Original format: A1 | | | | | Original format: A1 | | | | |
| External identity: PRZEDSIĘBIORSTWO PANSTWOWE ELEKTROWNIA IM. T. KOSCIUSZKI | | | | | | | | | |
| Title: Polaniec Power Station | | | | | | | | | |
| Flue gas desulphurisation plant | | | | | | | | | |
| FGD-plant area C, Absorber | | | | | | | | | |
| Casing, System - Section 1 | | | | | | | | | |
| Steel Structures | | | | | | | | | |
| Projection conv.: ISO-E | | | | | Projection conv.: ISO-E | | | | |
| Status: / | | | | | Status: / | | | | |
| Page: / of / | | | | | Page: / of / | | | | |
| CAD file: A01553AC.DWG | | | | | CAD file: A01553AC.DWG | | | | |
| Drawing No.: CHTD/BW120c | | | | | Drawing No.: CHTD/BW120c | | | | |



- NOTES:
1. MEASURES IN MM, LEVELS IN M.
 2. GENERAL NOTES REFER DWG. W2HTD/BA101.
 3. NOZZLES REFER DWG. CHTD/BW193.
 4. DRAIN POS. REFER DWG. CHTD/BW190-A.
 5. MANHOLE POS. 3 REFER DWG. CHTD/BW191-B.
 6. MANHOLE POS. 4 REFER DWG. CHTD/BW192-A.
 7. TYPICAL DETAILS REFER DWG. CHTD/BW200, 201.
 8. GAS-REHEATER BEARING SYSTEM REFER DWG. CHTD/BW150, 151.
 9. PL 15x300 WARM BENT OR L 160x160x15.

RELEASED FOR CONSTRUCTION

| | | | | | | | | | |
|--|----------|-----------|--------------------------------|----------|----------|------------------|------------------|----------|----------|
| RÅDGIVENDE INGENIØRER ISC CONSULTING ENGINEERS | | | | | | | | | |
| Rev. d | | | | | | | | | |
| Rev. c | 05.12.96 | 05.12.96 | 05.12.96 | 05.12.96 | 05.12.96 | 05.12.96 | 05.12.96 | 05.12.96 | 05.12.96 |
| Rev. b | 26.01.96 | HSP | 26.01.96 | PWJ | 26.01.96 | 26.01.96 | 26.01.96 | 26.01.96 | 26.01.96 |
| Original | 10.11.95 | HSP | 10.11.95 | PWJ | 10.11.95 | 10.11.95 | 10.11.95 | 10.11.95 | 10.11.95 |
| Revision in zone: / Description: | | | | | | | | | |
| Sign. | Date | Sign. | Date | Sign. | Date | Welding symbols: | Scale: | | |
| Designed: | Checked: | Approved: | Adhere to general instruction: | | | | Original format: | A1 | |
| External identity: | | | | | | | | | |
| PRZEDSIĘBIORSTWO PAŃSTWOWE ELEKTROWNIA IM. T. KOŚCIUSZKI | | | | | | | | | |
| Title: | | | | | | | | | |
| Pólaniec Power Station | | | | | | | | | |
| Flue gas desulphurisation plant | | | | | | | | | |
| FGD-plant area C, Absorber | | | | | | | | | |
| Casing, System - Section 2 | | | | | | | | | |
| Steel structures | | | | | | | | | |
| Projection conv.: ISO-E | | | | | | | | | |
| Status: Ver. 2 | | | | | | | | | |
| Page: / of / | | | | | | | | | |
| CAD file: A01554AC.DWG | | | | | | | | | |
| Drawing No.: CHTD/BW130c | | | | | | | | | |

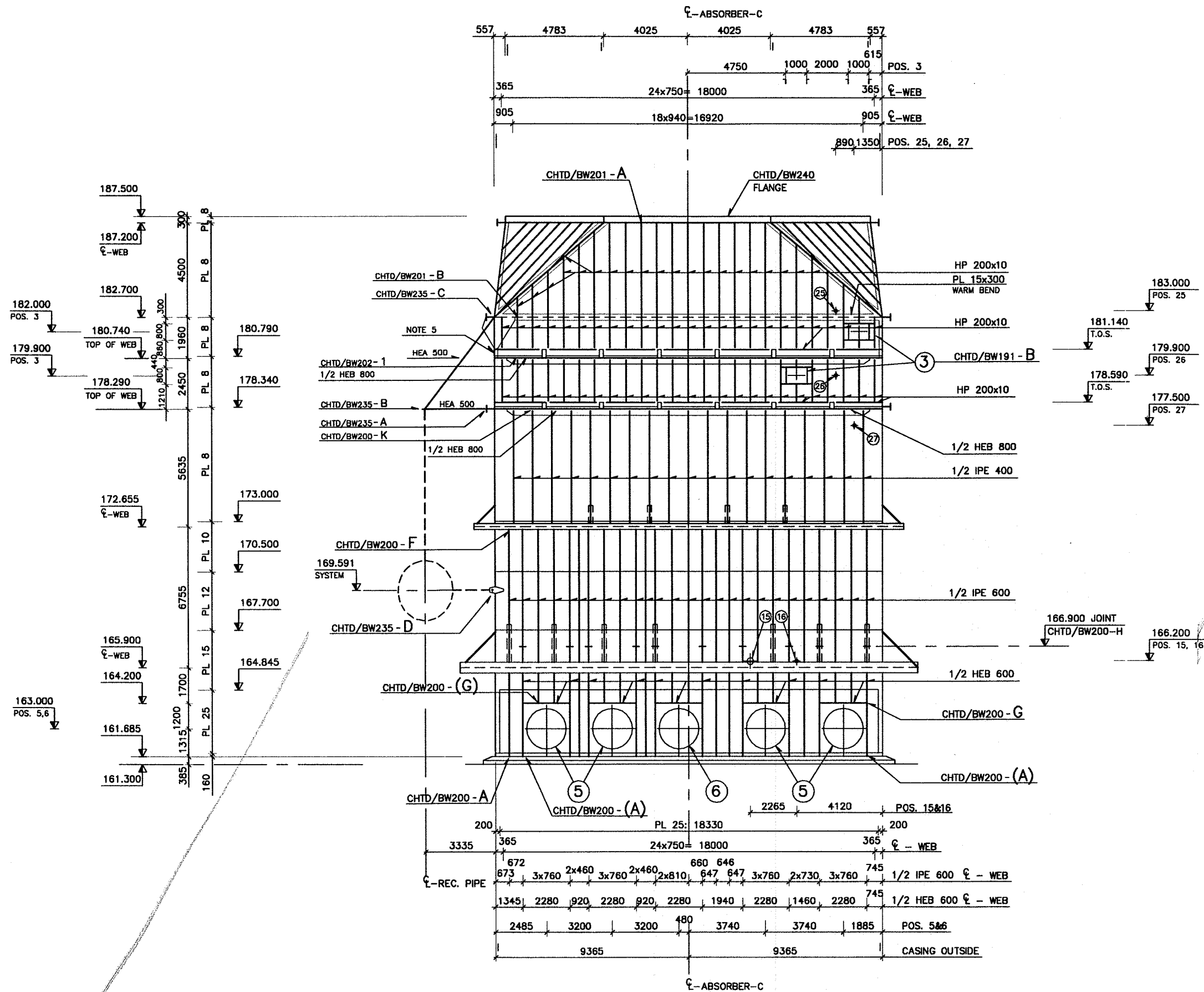


SECTION 2 (W2HTD/BW110)
1:100

- NOTES:**
- 1. MEASURES IN MM, LEVELS IN M.
 - 2. GENERAL NOTES REFER DWG. W2HTD/BA101.
 - 3. NOZZLES REFER DWG. CHTD/BW193.
 - 4. DRAIN POS. REFER DWG. CHTD/BW190-A.
 - 5. MANHOLE POS. 3 REFER DWG. CHTD/BW191-B.
 - 6. MANHOLE POS. 4 REFER DWG. CHTD/BW192-A.
 - 7. TYPICAL DETAILS REFER DWG. CHTD/BW200, 201.
 - 8. GAS-REHEATER BEARING SYSTEM REFER DWG. CHTD/BW150, 151.
 - 9. PL 15x300 WARM BENT OR L 160x160x15.

**RELEASED
FOR
CONSTRUCTION**

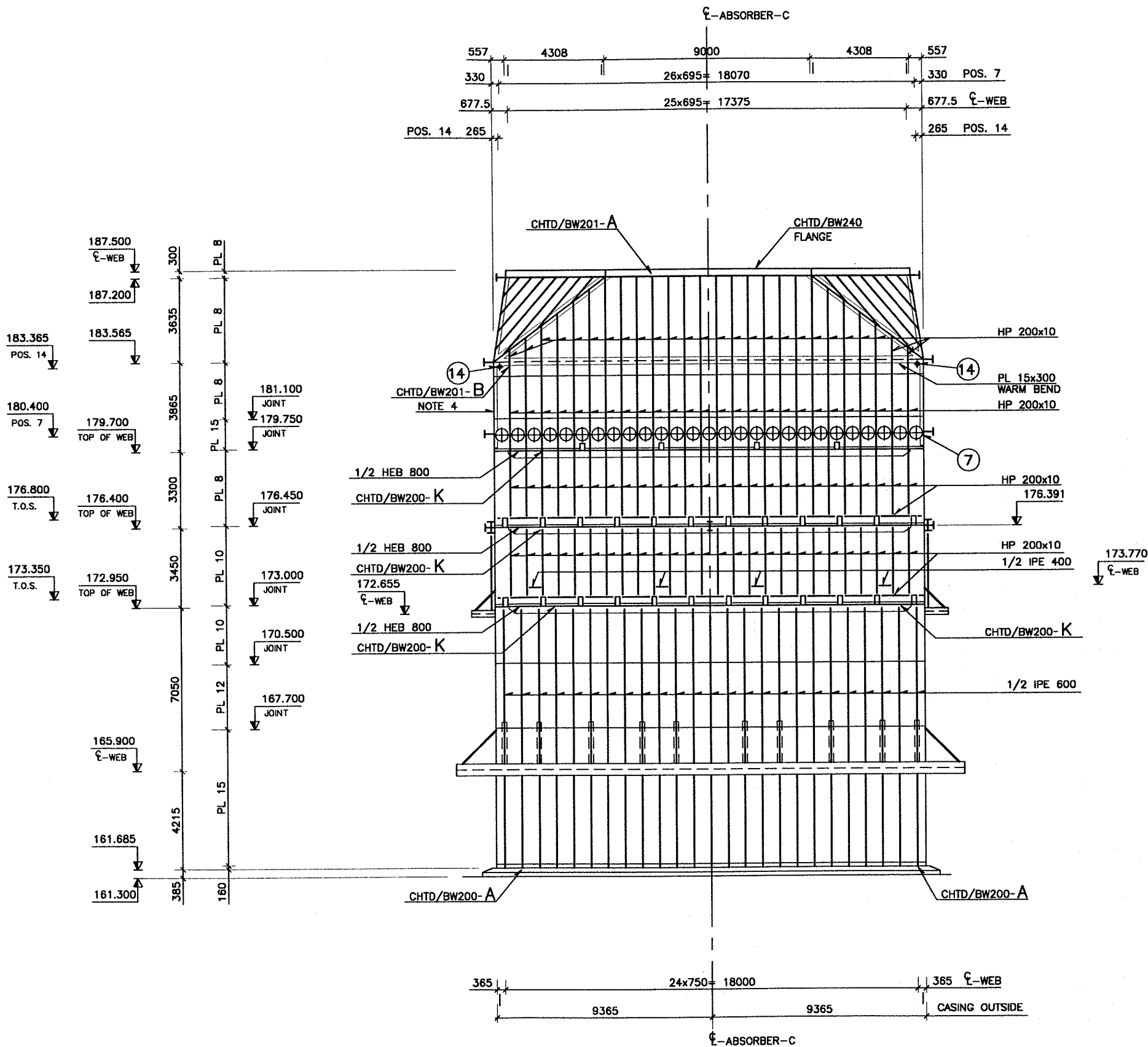
| | | | | | | | | | |
|--|----------|-----------|---------------------------|----------|----------|----------|----------|----------|----------|
| RÅDGIVENDE INGENIØRER ISC CONSULTING ENGINEERS | | | | | | | | | |
| Rev. d | | | | | | | | | |
| Rev. c | | | | | | | | | |
| Rev. b | 26.01.96 | 26.01.96 | 26.01.96 | 26.01.96 | 26.01.96 | 26.01.96 | 26.01.96 | 26.01.96 | 26.01.96 |
| Original | 10.11.95 | 10.11.95 | 10.11.95 | 10.11.95 | 10.11.95 | 10.11.95 | 10.11.95 | 10.11.95 | 10.11.95 |
| Sign | Date | Sign | Date | Sign | Date | Sign | Date | Sign | Date |
| Designed: | Checked: | Approved: | Welding symbols: ISO-E | | | | Scale: | 1:100 | |
| Adhere to general instruction | | | | | | | | | |
| Original format: A1 | | | | | | | | | |
| External identity: | | | | | | | | | |
| PRZEDSIĘBIORSTWO PAŃSTWOWE ELEKTROWNIA IM. T. KOŚCIUSZKI | | | | | | | | | |
| Title: | | | | | | | | | |
| Polaniec Power Station | | | | | | | | | |
| Flue gas desulphurisation plant | | | | | | | | | |
| FGD-plant area C, Absorber | | | | | | | | | |
| Casing, System - Section 2 | | | | | | | | | |
| Steel structures | | | | | | | | | |
| Projection convent.: | | | | | | | | | |
| ISO-E | | | | | | | | | |
| Status: | | | | | | | | | |
| Ver. 2 | | | | | | | | | |
| Page: / of / | | | | | | | | | |
| CAD file: | | | | | | | | | |
| A01554AB.DWG | | | | | | | | | |
| Drawing No.: | | | | | | | | | |
| CHTD/BW130b | | | | | | | | | |



- NOTES:**
1. MEASURES IN MM, LEVELS IN M.
 2. GENERAL NOTES REFER DWG. W2HTD/BA101.
 3. NOZZLES REFER DWG. CHTD/BW193.
 4. MANHOLE POS. 3 REFER DWG. CHTD/BW191-B.
 5. PL 15x300 WARM BENT OR L 160x160x15.

**RELEASED
FOR
CONSTRUCTION**

| | | | | | | | | | |
|--|----------|-----------|---------------------------|----------|----------|----------|-----------------|----------|----------|
| RÅDGIVENDE INGENIØRER ISC CONSULTING ENGINEERS | | | | | | | | | |
| Rev. d | | | | | | | | | |
| Rev. c | | | | | | | | | |
| Rev. b | 26.01.96 | 26.01.96 | 26.01.96 | 26.01.96 | 26.01.96 | 26.01.96 | 26.01.96 | 26.01.96 | 26.01.96 |
| Original | 26.01.96 | 26.01.96 | 26.01.96 | 26.01.96 | 26.01.96 | 26.01.96 | 26.01.96 | 26.01.96 | 26.01.96 |
| Sign | Date | Sign | Date | Sign | Date | Sign | Date | Sign | Date |
| Designed: | Checked: | Approved: | Welding symbols: ISO-E | | | | Scale: 1:100 | | |
| Adhere to general instruction | | | | | | | | | |
| Original format: A1 | | | | | | | | | |
| External identity: PRZEDSIĘBIORSTWO PAŃSTWOWE ELEKTROWNIA IM. T. KOŚCIUSZKI | | | | | | | | | |
| Title: Polańiec Power Station Flue gas desulphurisation plant FGD-plant area C, Absorber Casing, System - Section 3C Steel structures | | | | | | | | | |
| Projection convent.: ISO-E | | | | | | | | | |
| Status: Ver. 2 | | | | | | | | | |
| Page: / of / | | | | | | | | | |
| CAD file: A01555AB.DWG | | | | | | | | | |
| Drawing No.: CHTD/BW131b | | | | | | | | | |



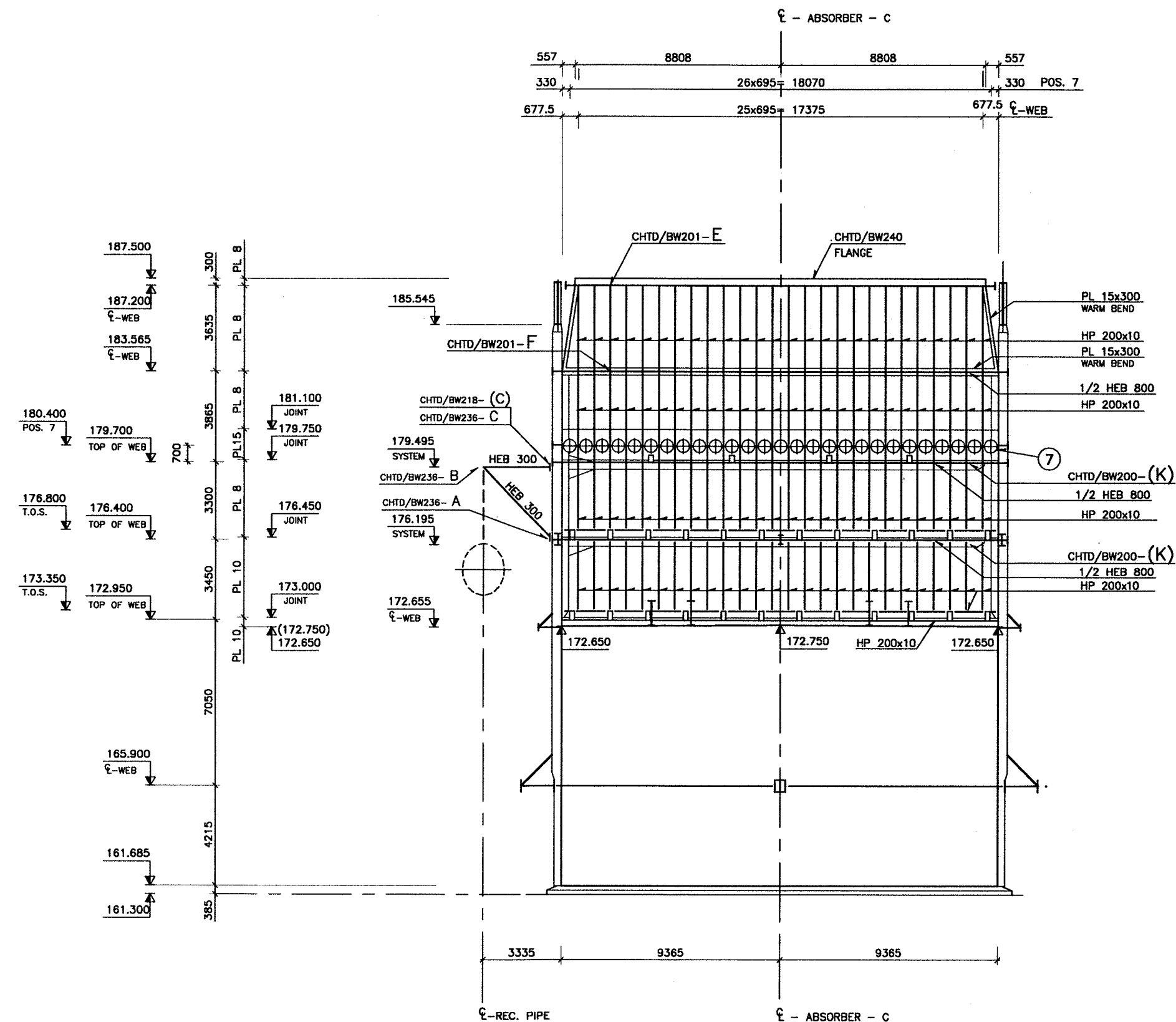
NOTES:

1. MEASURES IN MM, LEVELS IN M.
2. GENERAL NOTES REFER DWG. W2HTD/BA101.
3. NOZZLES REFER DWG. CHTD/BW193.
4. PL 15x300 HOT BENT OR L 160x160x15.
5. TYPICAL DETAILS REFER DWG. CHTD/BW200, 201.

RELEASED
FOR
CONSTRUCTION

| | | | | | | | | | |
|---|----------|-----------|------------------------|----------|----------|----------|--------------|---------------------|----------|
| RÅDGIVENDE INGENIØRER ISC CONSULTING ENGINEERS | | | | | | | | | |
| Rev. d | | | | | | | | | |
| Rev. c | | | | | | | | | |
| Rev. b | 26.01.96 | 26.01.96 | 26.01.96 | 26.01.96 | 26.01.96 | 26.01.96 | 26.01.96 | 26.01.96 | 26.01.96 |
| Original | 10.11.95 | HSP | 10.11.95 | PVJ | 10.11.95 | 10.11.95 | 10.11.95 | 10.11.95 | 10.11.95 |
| Sign | Date | Sign | Date | Sign | Date | Sign | Date | Sign | Date |
| Designed: | Checked: | Approved: | Welding symbols: ISO-E | | | | Scale: 1:100 | Original format: A1 | |
| External identity: PRZEDSIĘBIORSTWO PANSTWOWE ELEKTROWNIA IM. T. KOSCIUSZKI | | | | | | | | | |
| Title: Polaniec Power Station | | | | | | | | | |
| Flue gas desulphurisation plant | | | | | | | | | |
| FGD- plant area C, Absorber | | | | | | | | | |
| Casing, System - Section 4 | | | | | | | | | |
| Steel structures | | | | | | | | | |
| Projection conv.: ISO-E | | | | | | | | | |
| Status: Ver. 2 | | | | | | | | | |
| Page: / of / | | | | | | | | | |
| CAD file: A01556AB.DWG | | | | | | | | | |
| Drawing No.: CHTD/BW132b | | | | | | | | | |

1 2 3 4 5 6 7 8 9 10 11 12



SECTION 5 (W2HTD/BW110)
1:100

NOTES:

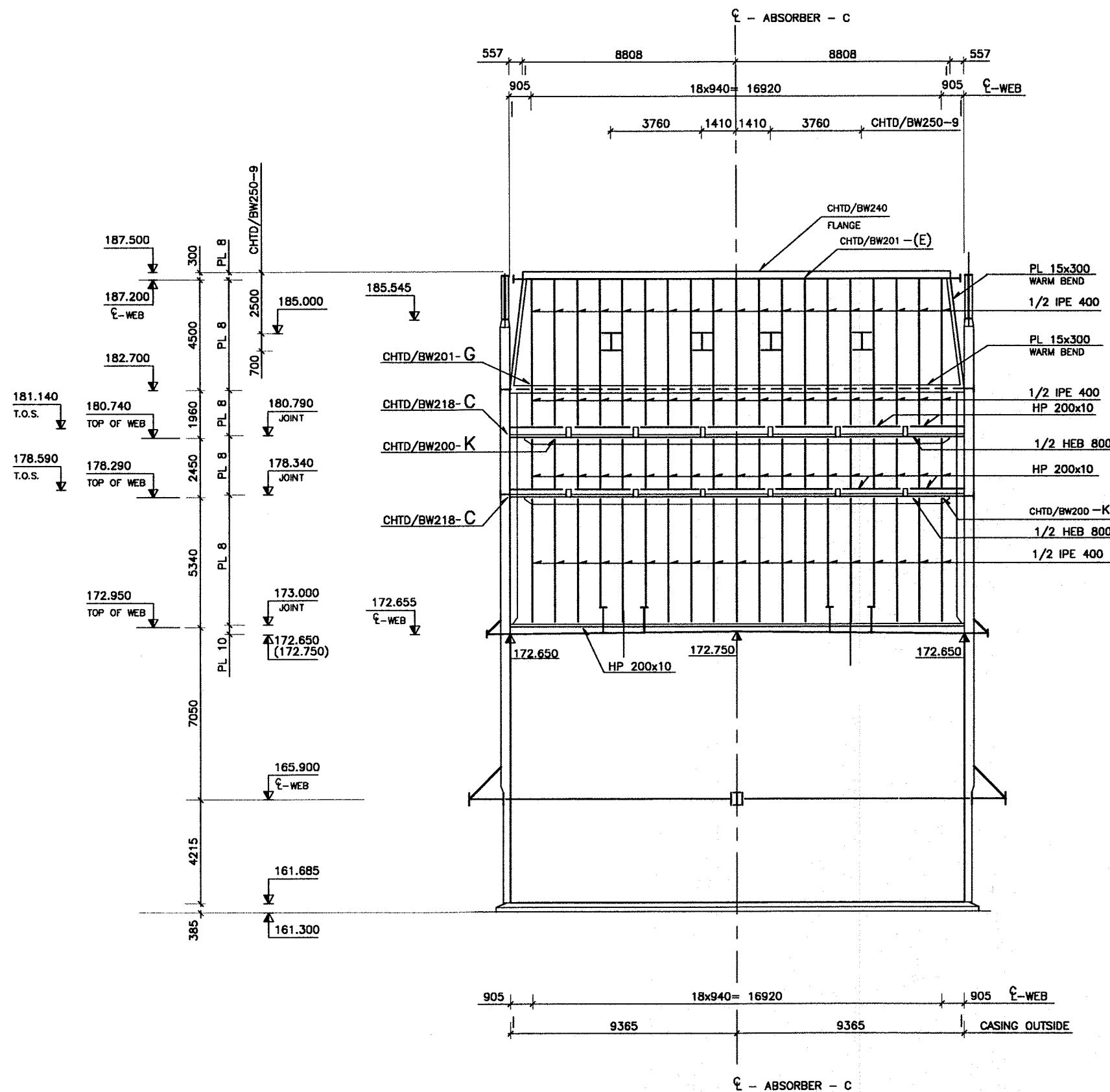
1. MEASURES IN MM, LEVELS IN M.
2. GENERAL NOTES REFER DWG. W2HTD/BA101.
3. NOZZLES REFER DWG. CHTD/BW193.
4. TYPICAL DETAILS REFER DWG. CHTD/BW200, 201.

RELEASED
FOR
CONSTRUCTION

| | | | | | | | | | |
|---|----------|----------|----------|-----------|----------|-------------------|----------|----------|----------|
| RÅDGIVENDE INGENIØRER ISC CONSULTING ENGINEERS | | | | | | | | | |
| Rev. d | | | | | | | | | |
| Rev. c | | | | | | | | | |
| Rev. b | 26.01.96 | 26.01.96 | 26.01.96 | 26.01.96 | 26.01.96 | 26.01.96 | 26.01.96 | 26.01.96 | 26.01.96 |
| Original | 10.11.95 | 10.11.95 | 10.11.95 | 10.11.95 | 10.11.95 | 10.11.95 | 10.11.95 | 10.11.95 | 10.11.95 |
| Sign | Date | Sign | Date | Sign | Date | Sign | Date | Sign | Date |
| Designed: | | Checked: | | Approved: | | Welding symbols: | | Scale: | |
| | | | | | | ISO-E | | 1:100 | |
| | | | | | | Adhere to general | | Original | |
| | | | | | | instruction: | | format: | A1 |
| External identity: | | | | | | | | | |
| PRZEDSIĘBIORSTWO PAŃSTWOWE ELEKTROWNIA M. T. KOSCIUSZKI | | | | | | | | | |
| Title: | | | | | | | | | |
| Polaniec Power Station | | | | | | | | | |
| Flue gas desulphurisation plant | | | | | | | | | |
| FGD-plant area C, Absorber | | | | | | | | | |
| Casing, System - Section 5 | | | | | | | | | |
| Steel Structures | | | | | | | | | |
| Projection convent: | | | | | | | | | |
| ISO-E | | | | | | | | | |
| Status: | | | | | | | | | |
| Ver. 2 | | | | | | | | | |
| Page: | | | | | | | | | |
| / of / | | | | | | | | | |
| CAD file: | | | | | | | | | |
| A01557AB.DWG | | | | | | | | | |
| Drawing No.: | | | | | | | | | |
| CHTD/BW133b | | | | | | | | | |

FIS miljø
FIS miljø a/s
Copenhagen
Denmark

1 2 3 4 5 6 7 8 9 10 11 12

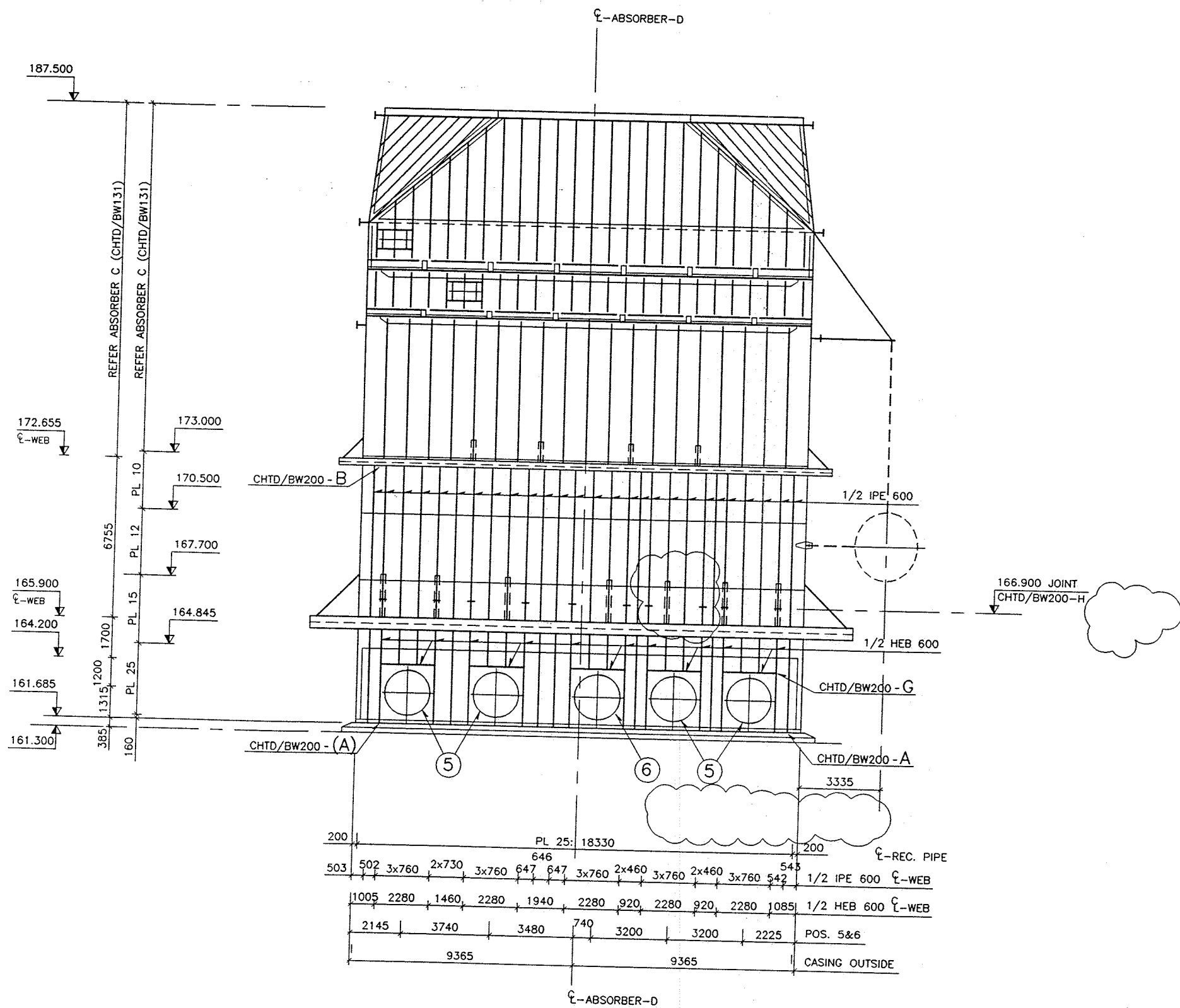


SECTION 6 (W2HTD/BW 110)
1:100

NOTES:
1. MEASURES IN MM, LEVELS IN M.
2. GENERAL NOTES REFER DWG. W2HTD/BA101.
3. TYPICAL DETAILS REFER DWG. CHTD/BW200, 201.

RELEASED
FOR
CONSTRUCTION


| | | | | | | | | | |
|--|----------|-----------|----------------------------------|----------|----------|----------|------------------------|----------|----------|
| RÅDGIVENDE INGENIØRER ISC CONSULTING ENGINEERS | | | | | | | | | |
| Rev. d | | | | | | | | | |
| Rev. c | | | | | | | | | |
| Rev. b | 26.01.96 | 26.01.96 | 26.01.96 | 26.01.96 | 26.01.96 | 26.01.96 | 26.01.96 | 26.01.96 | 26.01.96 |
| Original | 10.11.95 | 10.11.95 | 10.11.95 | 10.11.95 | 10.11.95 | 10.11.95 | 10.11.95 | 10.11.95 | 10.11.95 |
| Sign | Date | Sign | Date | Sign | Date | Sign | Date | Sign | Date |
| Designed: | Checked: | Approved: | Revision in zone: / Description: | | | | Welding symbols: ISO-E | | |
| Adhere to general instruction: | | | | | | | Scale: 1:100 | | |
| Original format: A1 | | | | | | | | | |
| External identity: | | | | | | | | | |
| PRZEDSIĘBIORSTWO PAŃSTWOWE ELEKTROWNIA IM. T. KOSCIUSZKI | | | | | | | | | |
| Title: Polaniec Power Station | | | | | | | | | |
| Flue gas desulphurisation plant | | | | | | | | | |
| FGD-plant area C, Absorber | | | | | | | | | |
| Casing, System - Section 6 | | | | | | | | | |
| Steel structures | | | | | | | | | |
| Projection convent.: ISO-E | | | | | | | | | |
| Status: Ver. 2 | | | | | | | | | |
| Page: / of / | | | | | | | | | |
| CAD file: A01558AB.DWG | | | | | | | | | |
| Drawing No.: CHTD/BW134b | | | | | | | | | |
| FIS miljø | | | | | | | | | |
| FIS miljø a/s Copenhagen Denmark | | | | | | | | | |



- NOTES:**
1. MEASURES IN MM, LEVELS IN M.
 2. GENERAL NOTES REFER DWG. W2HTD/BA101.
 3. NOZZLES REFER DWG CHTD/BW193.
 4. MANHOLE POS. 3 REFER DWG. CHTD/BW193-B.
 5. PL 15x300 HOT BENT OR L 160x160x15.

RELEASED FOR CONSTRUCTION

| | | | | | | | | | |
|--|--------------------------------|----------|----------|----------|-----------|----------|----------------------------------|--------|--|
| RÅDGIVENDE INGENIØRER ISC CONSULTING ENGINEERS | | | | | | | | | |
| Rev. d | | | | | | | | | |
| Rev. c | | | | | | | | | |
| Rev. b | 23U | 05.12.96 | 11U | 05.12.96 | 11U | 05.12.96 | | | |
| Original | BI | 26.01.96 | PW | 26.01.96 | HSP | 26.01.96 | Revision in zone: / Description: | | |
| | Sign | Date | Sign | Date | Sign | Date | Welding symbols: | Scale: | |
| | Designed: | | Checked: | | Approved: | | ISO-E: | 1:100 | |
| | Adhere to general instruction: | | | | | | Original format: | A1 | |
| External identity: PRZEDSIĘBIORSTWO PAŃSTWOWE ELEKTROWNIA IM. T. KOŚCIUSZKI | | | | | | | | | |
| Title: Polańiec Power Station | | | | | | | | | |
| Flue gas desulphurisation plant | | | | | | | | | |
| FGD-plant area D, Absorber | | | | | | | | | |
| Casing, System - Section 3D | | | | | | | | | |
| Steel structures | | | | | | | | | |
| Projection conv.: ISO-E: | | | | | | | Ver. 2 | | |
| Page: / of / | | | | | | | | | |
| CAD file: A01614AB.DWG | | | | | | | | | |
| Drawing No.: DHTD/BW135b | | | | | | | | | |

| | | | | | |
|--|-----------|----------|---------------------|----------------------|-------------------------------|
| RÅDGIVENDE INGENIØRER | | ISC | | CONSULTING ENGINEERS | |
| Rev. d | | | | | |
| Rev. c | | | | | |
| Rev. b | EC | 26.01.96 | HP | 26.01.96 | PO 26.01.96 |
| Original | BI | 10.11.95 | HSP | 10.11.95 | PVJ 10.11.95 |
| Revision in zone: / Description: | | | | | |
| | Sign. | Date | Sign. | Date | Sign. Date |
| | Designed: | | Checked: | | Approved: |
| Welding symbols: ISO-E | | | | | Scale: 1:100 |
| Adhere to general instruction | | | | | Original format. A1 |
| External identity : PRZEDSIĘBIORSTWO PAŃSTWOWE ELEKTROWNIA IM. T. KOŚCIUSZKI | | | | | |
| Title: Polaniec Power Station Flue gas desulphurisation plant FGD—plant area C, Absorber Casing, System - Level 165.900 Steel structures | | | | | |
| Projection convent.: ISO-E  | | | Ver. 2 | | |
| Status: | | | | | |
| Page: / of / | | | | | |
| CAD file: | | | A0156QAB.DWG | | |
| Drawing No.: | | | CHTD/BW141b | | |

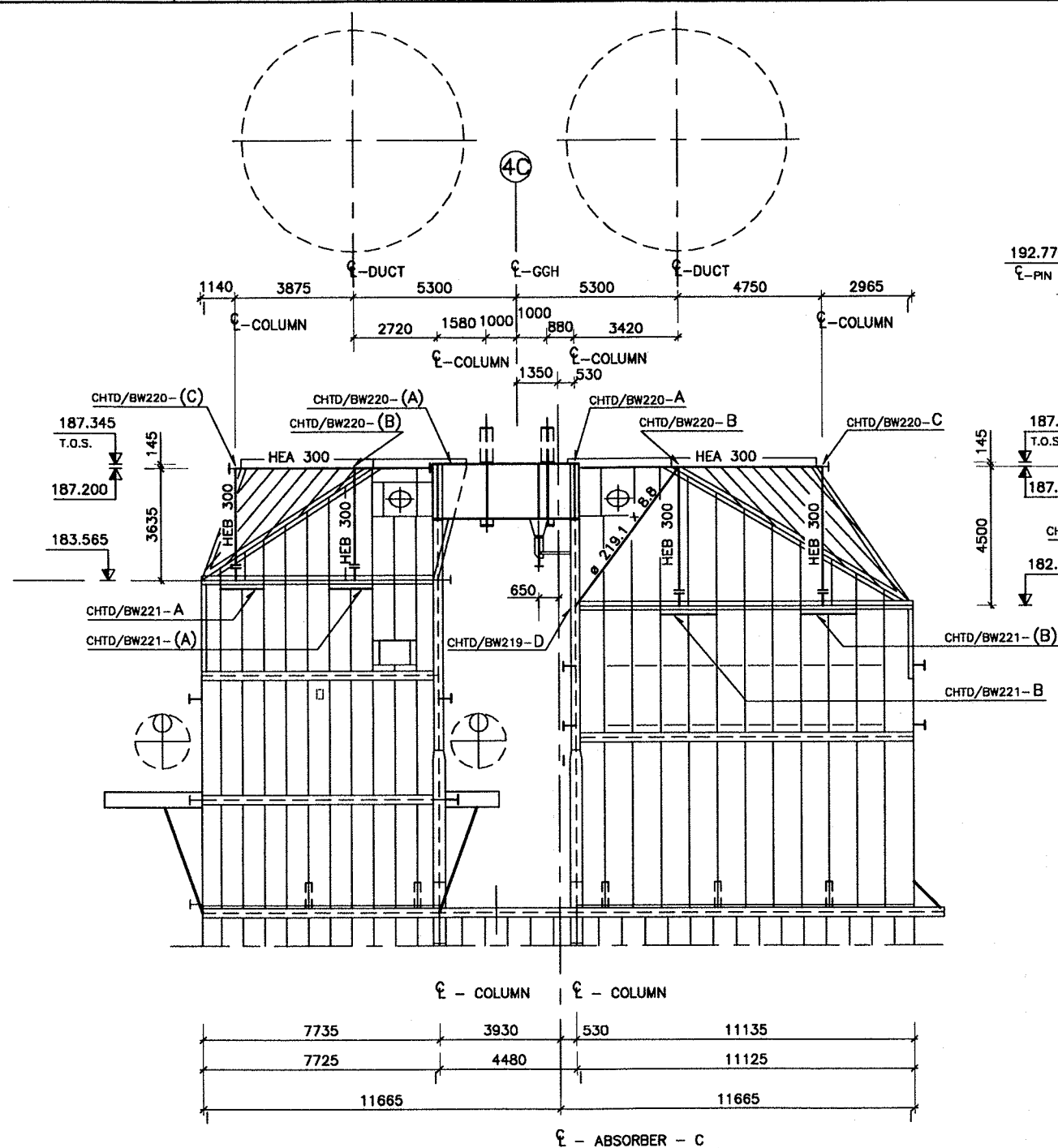


NOTES:

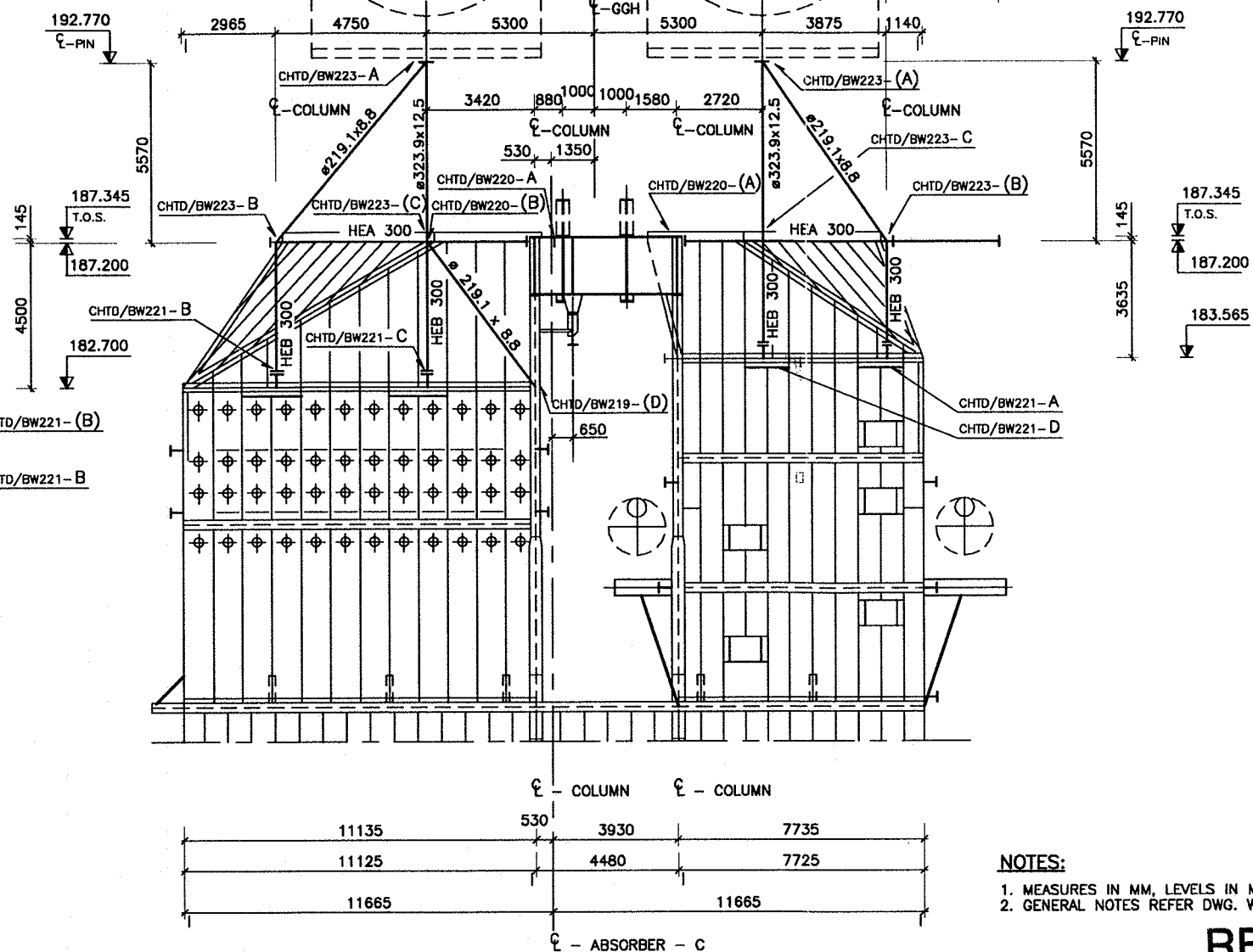
1. MEASURES IN MM, LEVELS IN M.
2. GENERAL NOTES REFER DWG. W2HTD/BA101.

RELEASED
FOR
CONSTRUCTION

| | | | | | |
|---|-----------|----------|----------|----------------------|--------------------|
| RÅDGIVENDE INGENIØRER | | ISC | | CONSULTING ENGINEERS | |
| Rev. d | | | | | |
| Rev. c | | | | | |
| Rev. b | BS | 26.01.96 | HS | 26.01.96 | PS |
| Rev. a | | | | | |
| Original | BI | 10.11.95 | HSP | 10.11.95 | PWJ |
| Revision in zone: / Description | | | | | |
| | Sign. | Date | Sign. | Date | Sign. |
| | Designed: | | Checked: | | Approved: |
| Welding symbols: ISO-E | | | | | Scale: 1:100 |
| Adhere to general instruction | | | | | Original format: A |
| External identity : PRZEDSIĘBIORSTWO PAŃSTWOWE ELEKTRONNIA IM. T. KOŚCIUSZKI | | | | | |
| Title: Polańiec Power Station Flue gas desulphurisation plant FGD—plant area C, Absorber, Casing System—Level 179.700/183.340 Steel structures | | | | | |
| Projection convnt.: ISO-E | | | Ver. 2 | | |
| Status: | | | | | |
| Page: / of / | | | | | |
| CAD file: A01562AB.DWG | | | | | |
| Drawing No.: CHTD/BW143b | | | | | |



ELEVATION 1 (CHTD/BW150)
1:100



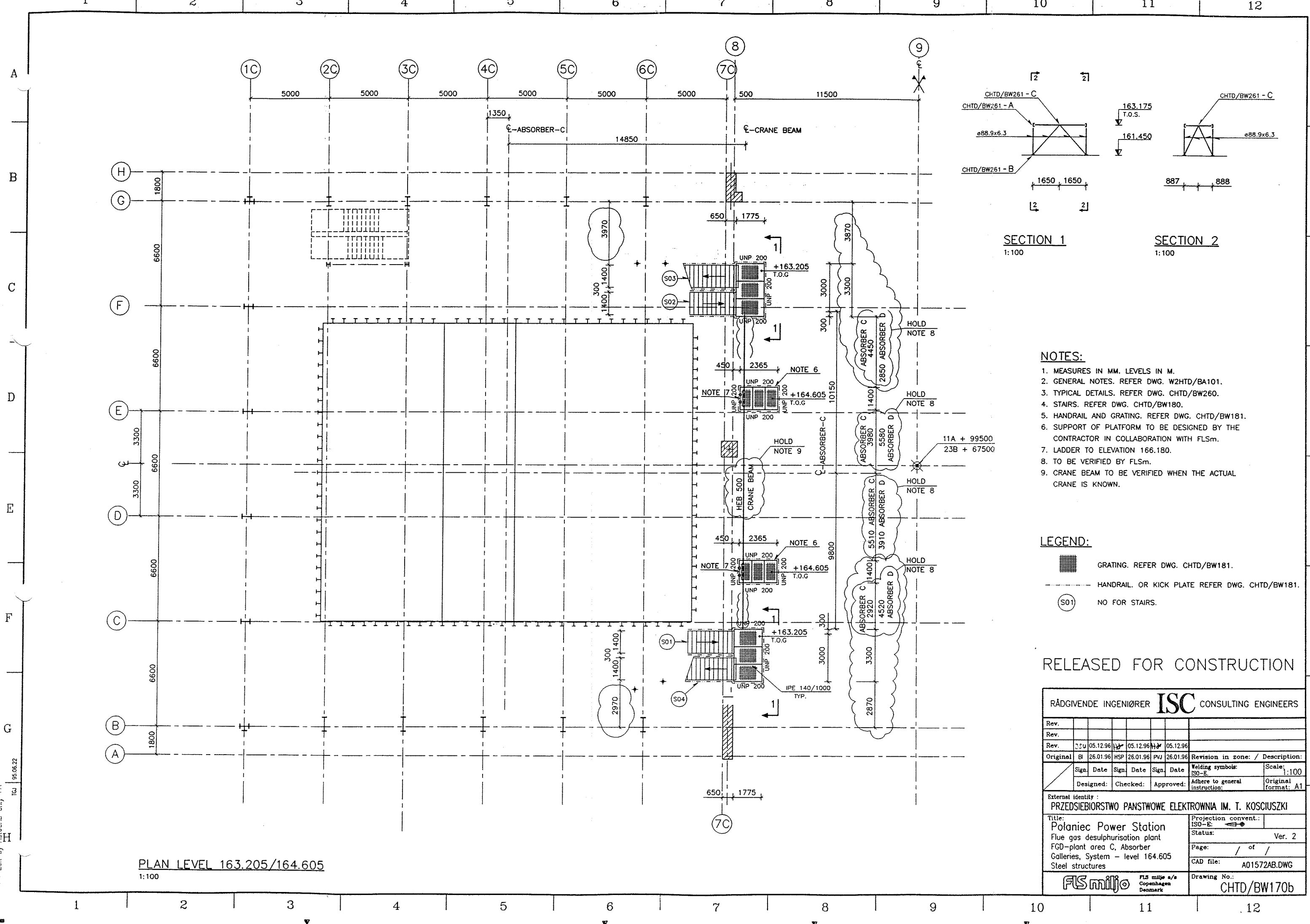
ELEVATION 2 (CHTD/BW150)
1:100

NOTES:

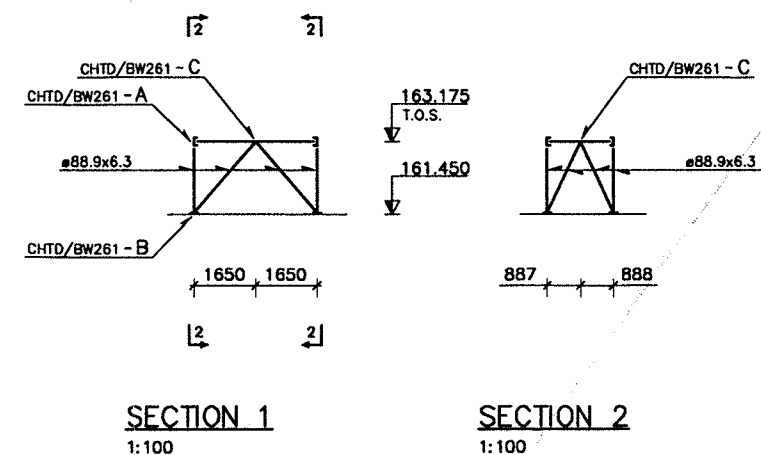
1. MEASURES IN MM, LEVELS IN M.
2. GENERAL NOTES REFER DWG. W2HTD/BA101.

RELEASED
FOR
CONSTRUCTION

| | | | | | | | | | |
|--|----------|-----------|-------------------------------|------|----------|----------------------------------|--------|-------|--|
| RÅDGIVENDE INGENIØRER ISC CONSULTING ENGINEERS | | | | | | | | | |
| Rev. d | | | | | | | | | |
| Rev. c | | | | | | | | | |
| Rev. b | 26.01.96 | HSP | 26.01.96 | PJ | 26.01.96 | | | | |
| Original | 10.11.95 | HSP | 10.11.95 | PJ | 10.11.95 | Revision in zone: / Description: | | | |
| Sign | Date | Sign | Date | Sign | Date | Welding symbols: ISO-E | Scale: | 1:100 | |
| Designed: | Checked: | Approved: | Adhere to general instruction | | | Original format: A1 | | | |
| External identity: PRZEDSIĘWSTWO PAŃSTWOWE ELEKTROWNIA IM. T. KOSCIUSZKI | | | | | | | | | |
| Title: Polaniec Power Station | | | | | | Projection convent.: ISO-E: | | | |
| Status: Flue gas desulphurisation plant | | | | | | Ver. 2 | | | |
| FGD-plant area C, Absorber | | | | | | Page: / of / | | | |
| Gas reheater, Bearing system II | | | | | | CAD file: A01567AB.DWG | | | |
| Steel Structures | | | | | | Drawing No.: CHTD/BW151b | | | |
| FLS miljø FLS miljø a/s Copenhagen Denmark | | | | | | | | | |



PLAN LEVEL 163.205/164.605
1:100



NOTES:

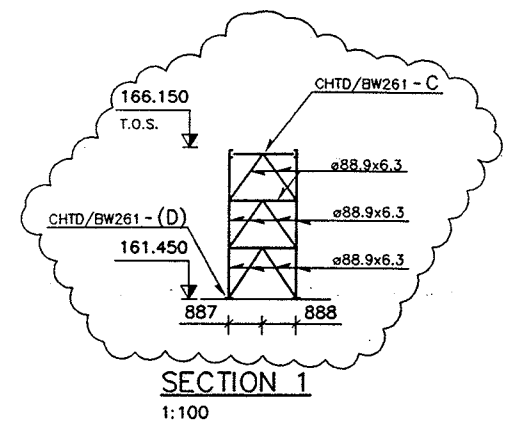
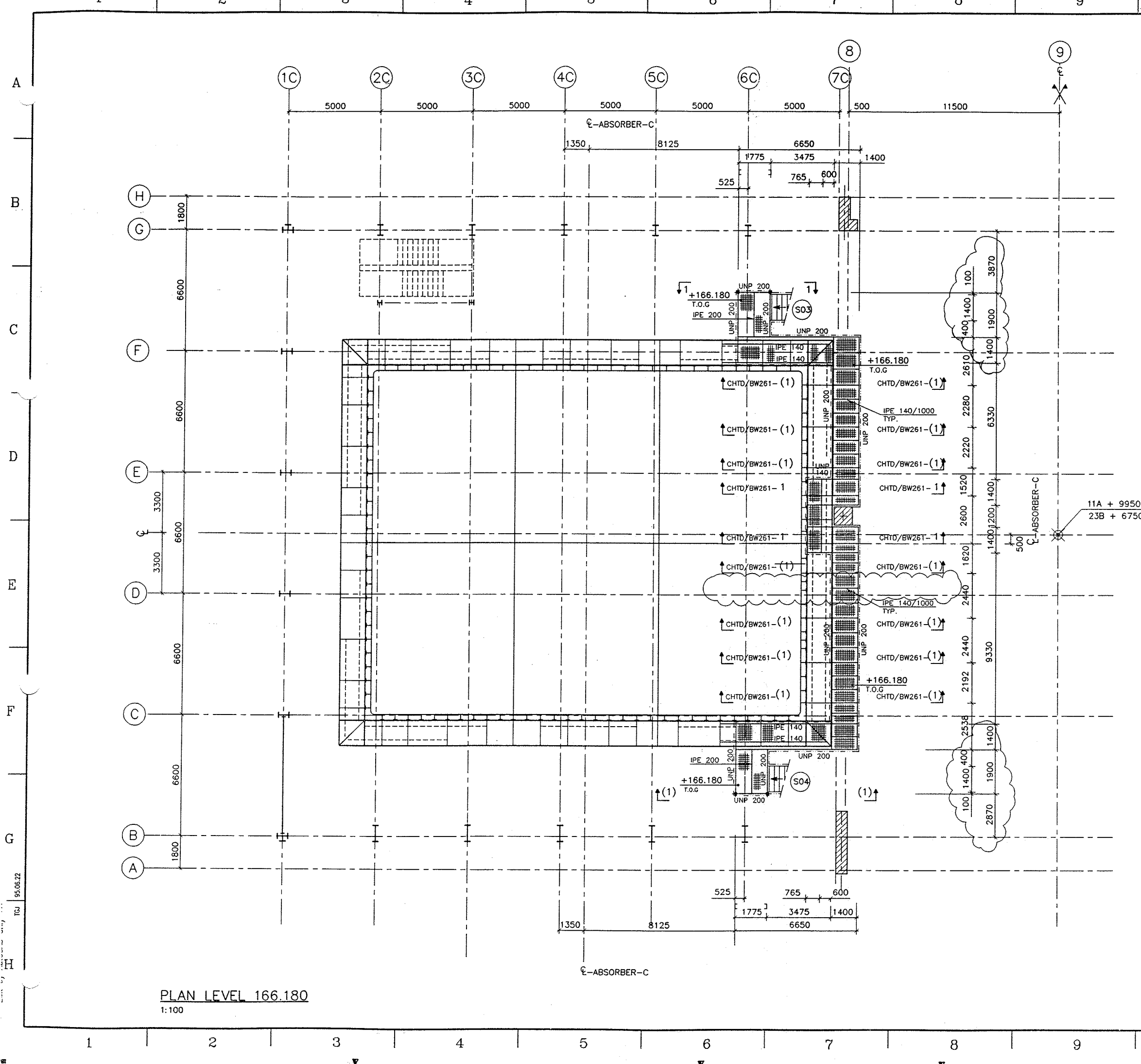
1. MEASURES IN MM. LEVELS IN M.
2. GENERAL NOTES. REFER DWG. W2HTD/BA101.
3. TYPICAL DETAILS. REFER DWG. CHTD/BW260.
4. STAIRS. REFER DWG. CHTD/BW180.
5. HANDRAIL AND GRATING. REFER DWG. CHTD/BW181.
6. SUPPORT OF PLATFORM TO BE DESIGNED BY THE CONTRACTOR IN COLLABORATION WITH FLSm.
7. LADDER TO ELEVATION 166.180.
8. TO BE VERIFIED BY FLSm.
9. CRANE BEAM TO BE VERIFIED WHEN THE ACTUAL CRANE IS KNOWN.

LEGEND:

- GRATING. REFER DWG. CHTD/BW181.
- HANDRAIL OR KICK PLATE REFER DWG. CHTD/BW181.
- NO FOR STAIRS.

RELEASED
FOR
CONSTRUCTION

| | | | | | | | | | |
|--|----------|----------|----------|-----------|----------|--------------------------------------|------------------------|--|--|
| RÅDGIVENDE INGENIØRER ISC CONSULTING ENGINEERS | | | | | | | | | |
| Rev. | | | | | | | | | |
| Rev. | | | | | | | | | |
| Original | 26.01.96 | 26.01.96 | 26.01.96 | 26.01.96 | 26.01.96 | Revision in zone: / Description: | | | |
| Sign | Date | Sign | Date | Sign | Date | Welding symbols: ISO-B | Scale: 1:100 | | |
| Designed: | | Checked: | | Approved: | | Adhere to general instruction | Original format: A1 | | |
| External identity: PRZEDSIĘBÓRSTWO PAŃSTWOWE ELEKTROWNIA IM. T. KOSCIUSZKI | | | | | | | | | |
| Title: Polaniec Power Station | | | | | | Projection convent.: ISO-B | | | |
| Status: Flue gas desulphurisation plant | | | | | | Ver. 2 | | | |
| Page: FGD-plant area C, Absorber | | | | | | Page: / of / | | | |
| CAD file: Galleries, System - level 164.605 | | | | | | A01572AA.DWG | | | |
| Steel structures | | | | | | Drawing No.: CHTD/BW170a | | | |
| FLS miljø FLS miljø a/s Copenhagen Denmark | | | | | | | | | |



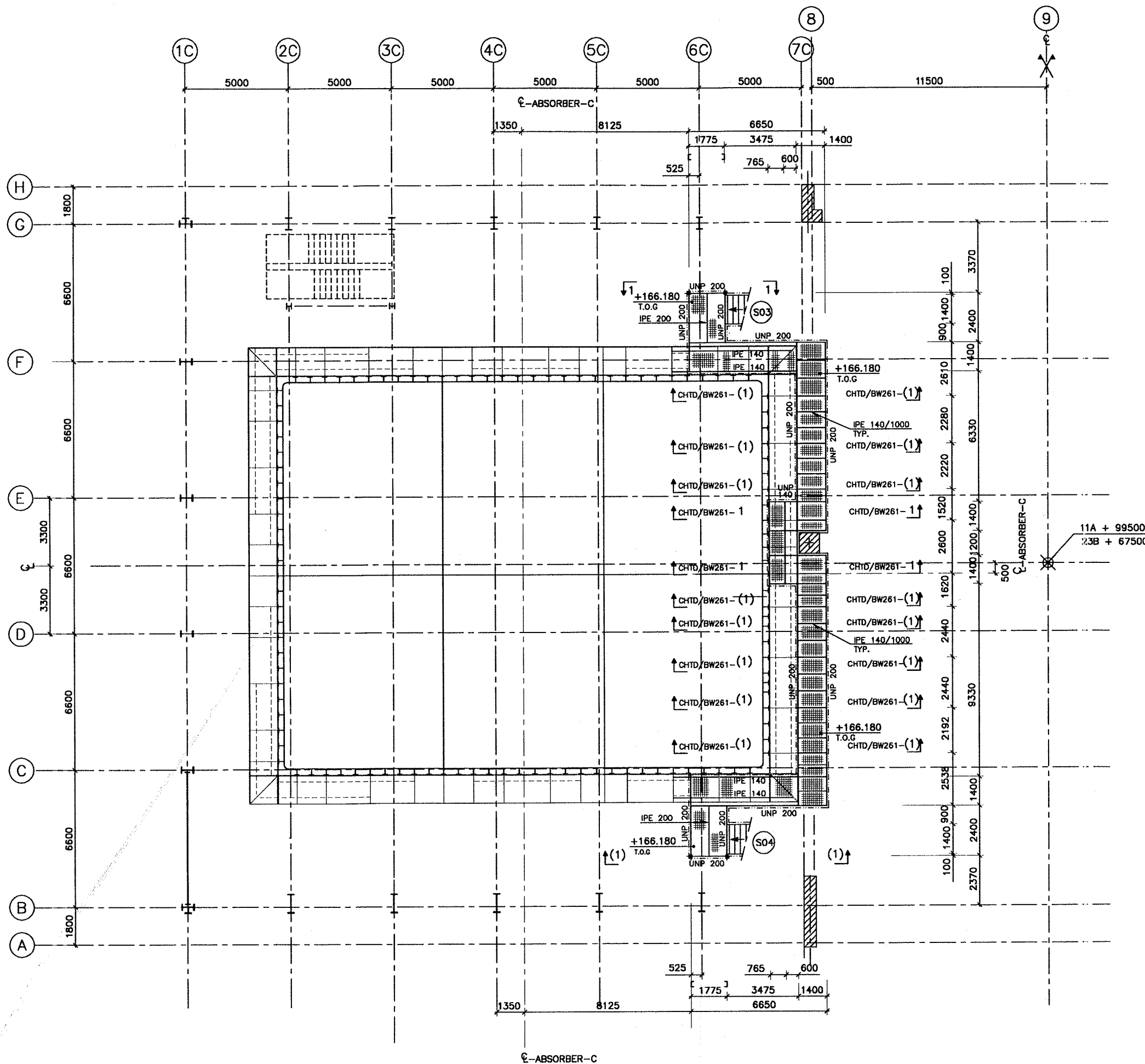
- NOTES:**
1. MEASURES IN MM. LEVELS IN M.
 2. GENERAL NOTES. REFER DWG. W2HTD/BA101.
 3. TYPICAL DETAILS. REFER DWG. CHTD/BW260.
 4. STAIRS. REFER DWG. CHTD/BW180.
 5. HANDRAIL AND GRATING. REFER DWG. CHTD/BW181.

- LEGEND:**
- GRATING. REFER DWG. CHTD/BW181.
 - HANDRAIL OR KICK PLATE REFER DWG. CHTD/BW181.
 - NO FOR STAIRS.

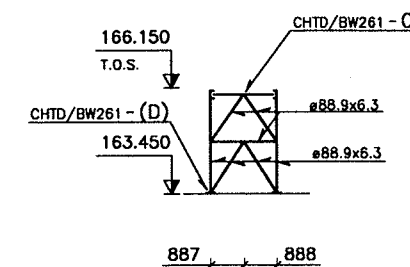
RELEASED FOR CONSTRUCTION

| | | | | | | | | | |
|--|----------|-----------|--------------------------------|----------|------|------------------|--|----|--|
| RÅDGIVENDE INGENIØRER ISC CONSULTING ENGINEERS | | | | | | | | | |
| Rev. | | | | | | | | | |
| Rev. | JSV | 05.12.96 | HJ | 05.12.96 | HJ | 05.12.96 | | | |
| Original | 81 | 26.01.96 | HSP | 26.01.96 | PWJ | 26.01.96 | Revision in zone: / Description: | | |
| Sign. | Date | Sign. | Date | Sign. | Date | Welding symbols: | Scale: | | |
| Designed: | Checked: | Approved: | Adhere to general instruction: | | | | Original format: | A1 | |
| External identity: PRZEDSIĘBIORSTWO PAŃSTWOWE ELEKTROWNIA IM. I. KOSCIUSZKI | | | | | | | | | |
| Title: Połaniec Power Station Flue gas desulphurisation plant FGD-plant area C, Absorber Galleries, System- level 166.180 Steel structures | | | | | | | Projection convent.: ISO-E: Ver. 2 | | |
| FIS miljø | | | | | | | FIS miljø a/s Copenhagen Denmark | | |
| Page: / of / | | | | | | | CAD file: A01573AB.DWG | | |
| Drawing No.: CHTD/BW171b | | | | | | | | | |

PLAN LEVEL 166.180
1:100



PLAN LEVEL 166.180
1:100



SECTION 1
1:100


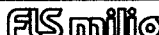
NOTES:

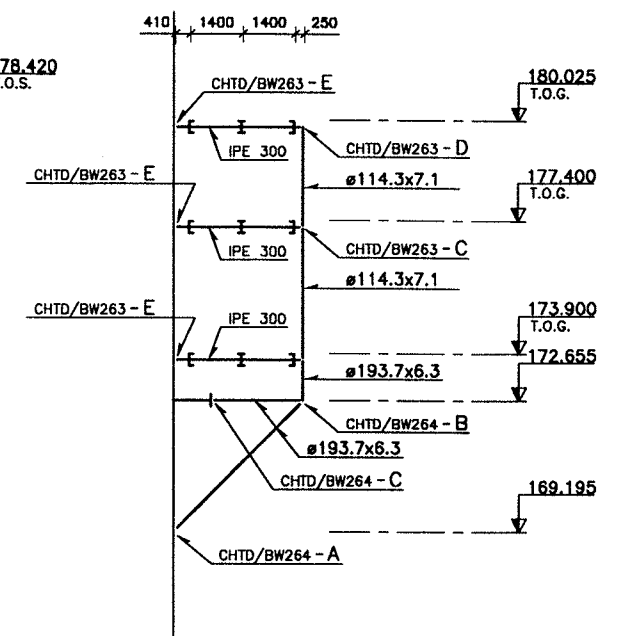
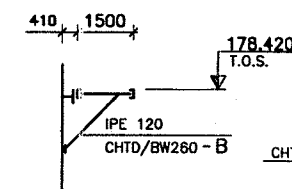
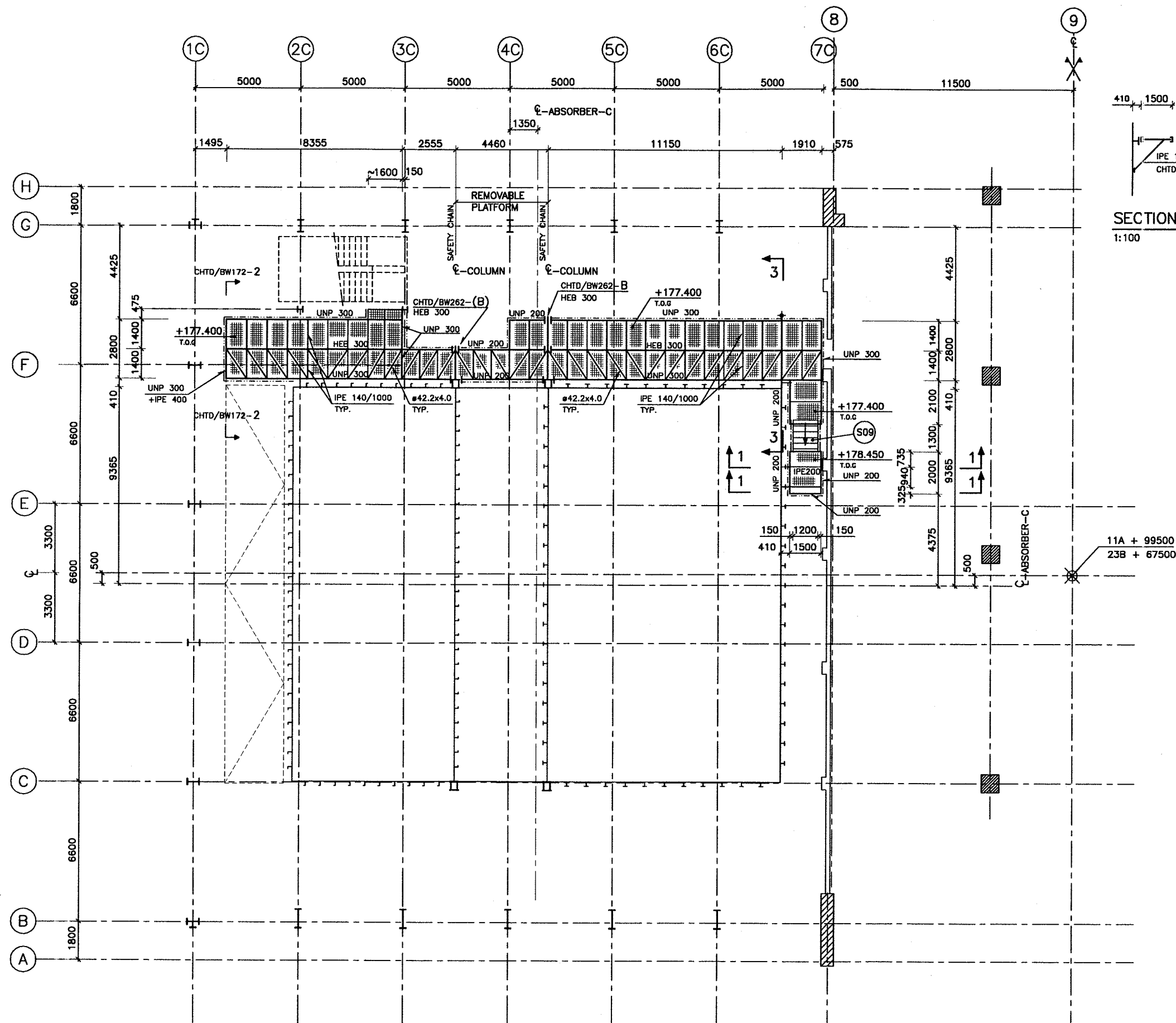
1. MEASURES IN MM. LEVELS IN M.
2. GENERAL NOTES. REFER DWG. WZHTD/BA101.
3. TYPICAL DETAILS. REFER DWG. CHTD/BW260.
4. STAIRS. REFER DWG. CHTD/BW180.
5. HANDRAIL AND GRATING. REFER DWG. CHTD/BW181.

LEGEND:

- GRATING. REFER DWG. CHTD/BW181.
- HANDRAIL OR KICK PLATE REFER DWG. CHTD/BW181.
- NO FOR STAIRS.

**RELEASED
FOR
CONSTRUCTION**

| RÅDGIVENDE INGENIØRER ISC CONSULTING ENGINEERS | | | | | | | | | |
|--|-----------|----------|----------|----------|-----------|--|--------------------------------|------------------|---|
| Rev. | | | | | | | | | |
| Rev. | | | | | | | | | |
| Rev. | | | | | | | | | |
| Original | 26.01.96 | 26.01.96 | 26.01.96 | 26.01.96 | 26.01.96 | Revision in zone: / Description: | | | |
| Sign. | Date | Sign. | Date | Sign. | Date | Welding symbols: | Scale: | 1:10 | |
| | Designed: | | Checked: | | Approved: | | Adhere to general instruction: | Original format: | A |
| External identity : | | | | | | | | | |
| PRZEDSIĘBIORSTWO PAŃSTWOWE ELEKTROWNIA IM. T. KOŚCIUSZKI | | | | | | | | | |
| Title: | | | | | | Projection convent.: | | | |
| Polaniec Power Station | | | | | | ISO-E:  | | | |
| Flue gas desulphurisation plant | | | | | | Status: Ver. 2 | | | |
| FGD-plant area C, Absorber | | | | | | Page: / of / | | | |
| Galleries, System- level 166.180 | | | | | | CAD file: A01573AA.DWG | | | |
| Steel structures | | | | | | Drawing No.: | | | |
|  FLS miljø a/s Copenhagen Denmark | | | | | | CHTD/BW171a | | | |



SECTION 3 (CHTD/BW172,173,174)
1:100

NOTES:

1. MEASURES IN MM. LEVELS IN M.
2. GENERAL NOTES. REFER DWG. W2HTD/BA101.
3. TYPICAL DETAILS. REFER DWG. CHTD/BW260.
4. STAIRS. REFER DWG. CHTD/BW180.
5. HANDRAIL AND GRATING. REFER DWG. CHTD/BW181.

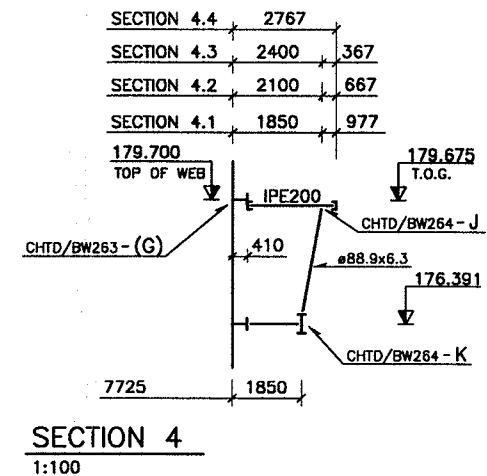
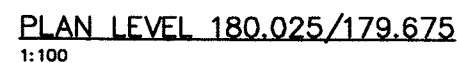
LEGEND:



- GRATING. REFER DWG. CHTD/BW181.
- HANDRAIL OR KICK PLATE. REFER DWG. CHTD/BW181.
- S01 NO FOR STAIRS.

**RELEASED
FOR
CONSTRUCTION**

| | | | | | | | | | |
|--|----------|-----------|-------------------------------|----------|----------|----------------------------------|--------|---------------------|--|
| RÅDGIVENDE INGENIØRER ISC CONSULTING ENGINEERS | | | | | | | | | |
| Rev. | | | | | | | | | |
| Rev. | | | | | | | | | |
| Rev. | | | | | | | | | |
| Original | 26.01.96 | 26.01.96 | 26.01.96 | 26.01.96 | 26.01.96 | Revision in zone: / Description: | | | |
| Sign | Date | Sign | Date | Sign | Date | Welding symbols: | Scale: | | |
| Designed: | Checked: | Approved: | Adhere to general instruction | | | ISO-E | 1:100 | Original format: A1 | |
| External identity: | | | | | | | | | |
| PRZEDSIĘBIORSTWO PAŃSTWOWE ELEKTROWNIA IM. T. KOŚCIUSZKI | | | | | | | | | |
| Title: | | | | | | | | | |
| Polaniec Power Station | | | | | | | | | |
| Flue gas desulphurisation plant | | | | | | | | | |
| FGD-plant area C, Absorber | | | | | | | | | |
| Galleries, System- level 177.400 | | | | | | | | | |
| Steel structures | | | | | | | | | |
| Projection convent.: ISO-E | | | | | | | | | |
| Status: Ver. 2 | | | | | | | | | |
| Page: / of / | | | | | | | | | |
| CAD file: A01575AA.DWG | | | | | | | | | |
| Drawing No.: CHTD/BW173a | | | | | | | | | |

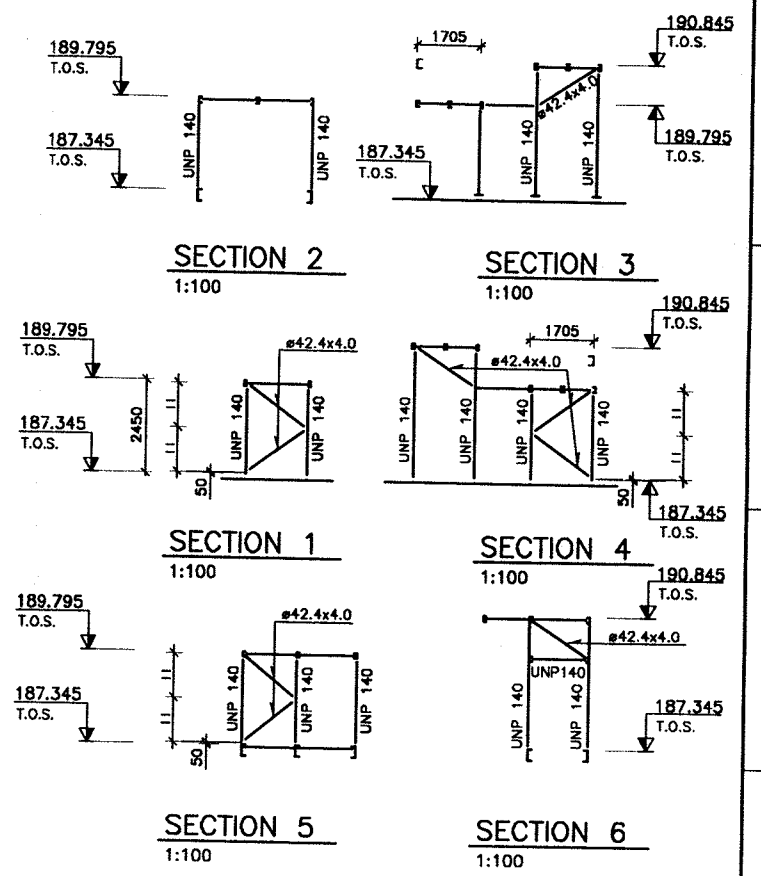
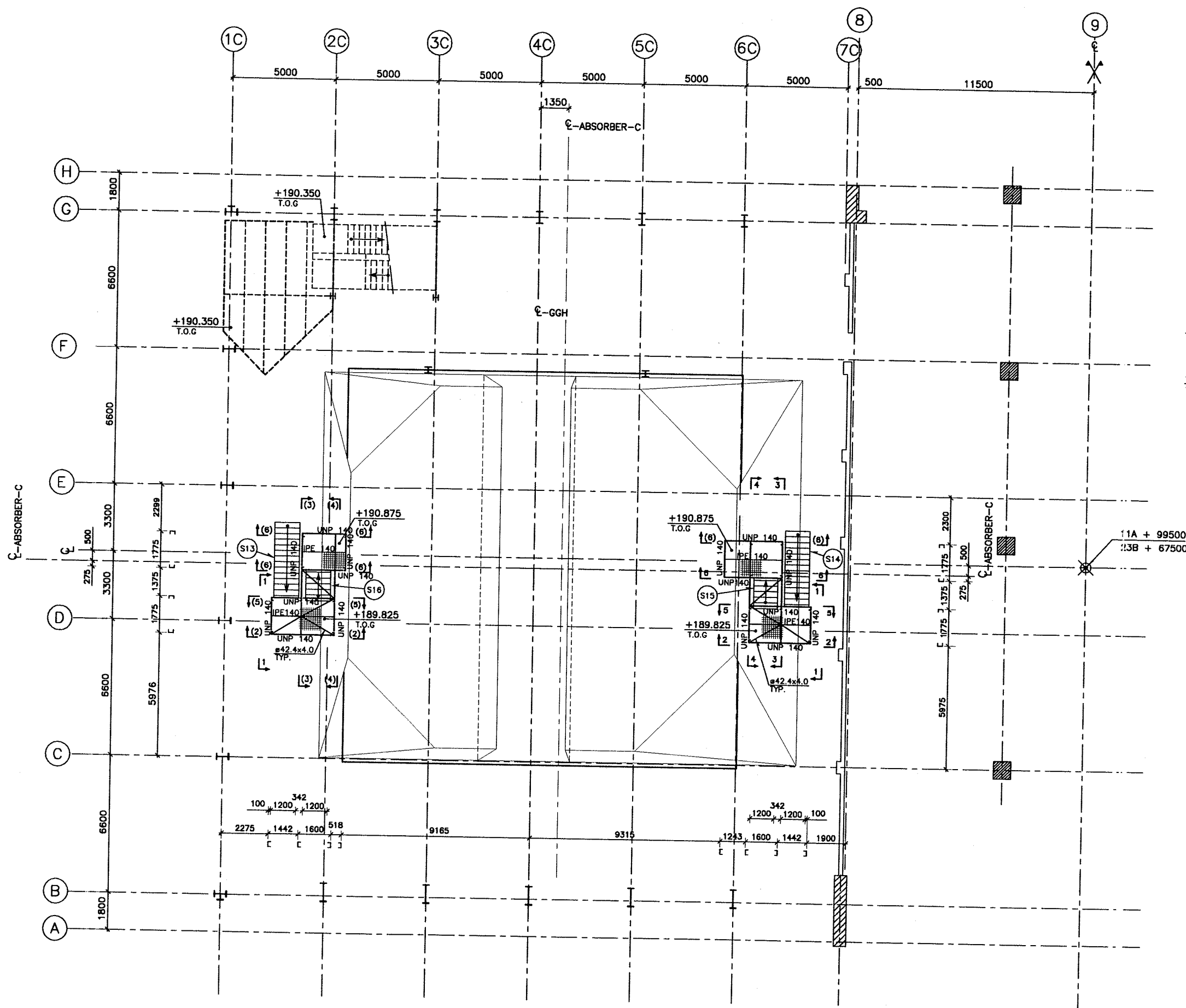
PLAN LEVEL 177.400/178.450
1:100



- LEGEND:
-  GRATING. REFER DWG. CHTD/BW181.
- HANDRAIL OR KICK PLATE. REFER DWG. CHTD/BW181.
-  NO FOR STAIRS.

RELEASED
FOR
CONSTRUCTION

| | | | | | | | | |
|--|-----------|----------|----------|----------|-----------|----------------------|--|------------------------|
| RÅDGIVENDE INGENIØRER | | | ISC | | | CONSULTING ENGINEERS | | |
| Rev. | | | | | | | | |
| Rev. | | | | | | | | |
| Rev. | | | | | | | | |
| Original | EC | 26.01.96 | HS | 26.01.96 | AK | 26.01.96 | Revision in zone: / Description: | |
| | Sign. | Date | Sign. | Date | Sign. | Date | Welding symbols: ISO-E | Scale: 1:100 |
| | Designed: | | Checked: | | Approved: | | Adhere to general instruction | Original format: A1 |
| External identity : PRZEDSIĘBIORSTWO PAŃSTWOWE ELEKTROWNIA IM. T. KOŚCIUŃSKI | | | | | | | | |
| Title: Połaniec Power Station Flue gas desulphurisation plant FGD—plant area C, Absorber Galleries, System—level 180.025 Steel structures | | | | | | | Projection convent.: ISO-E Status: Ver. 2 | |
| | | | | | | | Page: / of / CAD file: A01576AA.DWG | |
| FLS miljø FLS miljø a/s Copenhagen Denmark | | | | | | | Drawing No.: CHTD/BW174a | |



- NOTES:**
1. MEASURES IN MM. LEVELS IN M.
 2. GENERAL NOTES. REFER DWG. W2HTD/BA101.
 3. TYPICAL DETAILS. REFER DWG. CHTD/BW260.
 4. STAIRS. REFER DWG. CHTD/BW180.
 5. HANDRAIL AND GRATING. REFER DWG. CHTD/BW181.

- LEGEND:**
- GRATING. REFER DWG. CHTD/BW181.
 - HANDRAIL OR KICK PLATE. REFER DWG. CHTD/BW181.
 - NO FOR STAIRS.

**RELEASED
FOR
CONSTRUCTION**

| | | | | | | | | | |
|--|----------|-----------|-------------------------------|------|----------|--|--------|--|--|
| RÅDGIVENDE INGENIØRER ISC CONSULTING ENGINEERS | | | | | | | | | |
| Rev. | | | | | | | | | |
| Rev. | | | | | | | | | |
| Rev. | | | | | | | | | |
| Original | 26.01.96 | 1/1 | 26.01.96 | 1/1 | 26.01.96 | Revision in zone: / Description: | | | |
| Sign | Date | Sign | Date | Sign | Date | Welding symbols: | Scale: | | |
| | | | | | | ISO-E | 1:100 | | |
| Designed: | Checked: | Approved: | Adhere to general instruction | | | Original format: | A1 | | |
| External identity: | | | | | | | | | |
| PRZEDSIĘBIORSTWO PAŃSTWOWE ELEKTROWNIA M. T. KOŚCISZKI | | | | | | | | | |
| Title: | | | | | | | | | |
| Polaniec Power Station | | | | | | | | | |
| Flue gas desulphurisation plant | | | | | | | | | |
| FGD-plant area C, Absorber | | | | | | | | | |
| Galleries, System-level 190.875 | | | | | | | | | |
| Steel structures | | | | | | | | | |
| Projection convent: | | | | | | Ver. 2 | | | |
| Status: | | | | | | | | | |
| Page: | | | | | | / of / | | | |
| CAD file: | | | | | | A01578AA.DWG | | | |
| Drawing No.: | | | | | | CHTD/BW176a | | | |
| FIS miljö | | | | | | FIS miljø a/s Copenhagen Denmark | | | |

PLAN LEVEL 190.875/189.825
1:100

